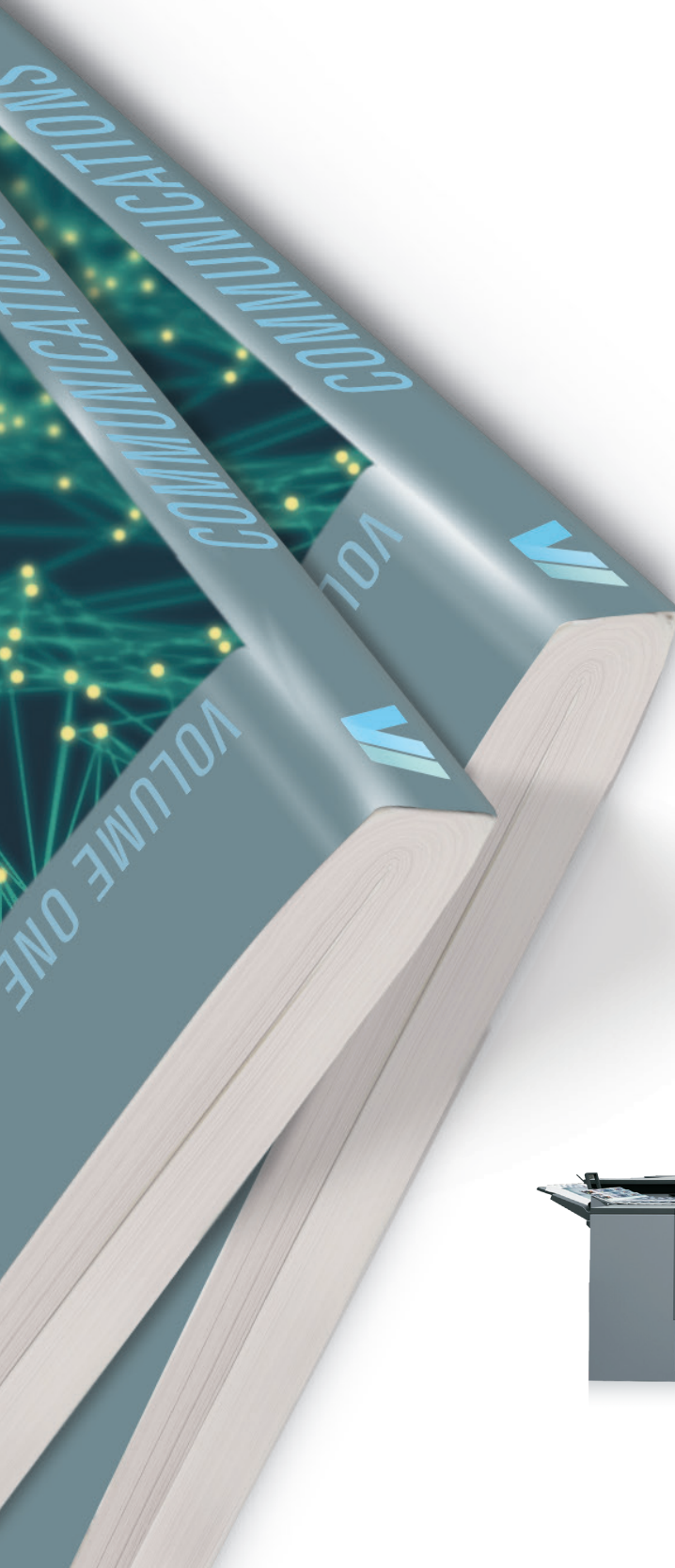




KONICA MINOLTA

Giving Shape to Ideas



- Industry-leading output of 100 ppm in color and B&W for all paper weights
- Long-running reliability, 1,000,000-page monthly duty cycle
- Enhanced Simitri® HD² toner for superior halftone and skin-tone reproduction
- Image quality that rivals offset printing at a fraction of the cost
- Optimized 1200 x 1200 dpi resolution with 8-bit processing
- SEAD IV screen processing to continuously maintain image stability over long press runs
- Hybrid decurling function for higher productivity
- Increased paper handling with 13,890-Sheet capacity and weights from 55 to 350 gsm
- Air suction paper handling that ensures virtually jam-free printing
- Saddle-stitched booklet option with three-side trim and square-fold
- 600-Page perfect-bound books with post-fusing cover insertion
- 15" Color lcd touch-panel – can be placed anywhere on unit
- Fiery®, Creo® and Konica Minolta image controller options

bizhub PRESS C1100

COLOR DIGITAL PRODUCTION PRESS / COPIER / SCANNER



press



bizhub PRESS C1100

COLOR DIGITAL PRODUCTION PRESS / COPIER / SCANNER

Descriptions

bizhub PRESS C1100 Overview The high-speed bizhub® PRESS C1100 sets a new standard in digital productivity, producing 5,000 or more sides per hour – saving space on your production floor and reducing time and labor costs by incorporating powerful inline finishing options, simple setup and automated color management.

System Specifications

Resolution	1,200 x 1,200 dpi x 8 bit 1,200 x 3,600 dpi equivalent
Paper weight	55–350 gsm
Duplex unit	Non-stack type; 55–350 gsm
Paper sizes	330 x 487 mm (up to 13" x 19.2")
Maximum image area	321 x 480 mm
Paper input capacity	Max.: 13,890 sheets
Paper output capacity	Max.: 13,600 sheets
Main unit dimensions	35.5" x 37.5" x 52" (W x D x H)
Main unit weight	948 lb

Productivity

8.5" x 11"	Max. per minute: 100 ppm
11" x 17"	Max. per minute: 52 ppm
13" x 19"	Max. per minute: 46 ppm
8.5" x 11"	Max. per hour: 5,192 pph
11" x 17"	Max. per hour: 2,762 pph
13" x 19"	Max. per hour: 2,581 pph

Controller

IC-308	External EFI Fiery Controller
IC-310	External EFI Fiery Controller
IC-312	External CREO Controller
IC-602	Internal Konica Minolta Controller

Scanner Specifications

Scan speed A4	Up to 42 opm
Scan resolution	600 x 600 dpi
Scan modes	TWAIN scan; Scan-to-HDD; Scan-to-FTP; Scan-to-SMB; Scan-to-eMail
Scan formats	TIFF (single and multi page); PDF

Copier Specifications

Gradations	256
Magnification	25–400%, in 0.1% steps
Multiple copies	1–9,999

Options

CR-101	Creaser unit for SD-513
FD-503	Folding and punching unit
FD-504	Square folding unit for SD-513
FS-532	100-sheet Stapling unit
GP-501	Multi (GBC) punching unit
GP-502	Auto ring binding unit
HM-101	Humidification unit for RU-511
HT-506	Heating unit for PF-707/8
LS-506	Stacking unit
PB-503	Perfect binding unit
PF-707	Air suction paper feed unit
PF-708	Air suction paper feed unit with ADF
PI-502	Post inserter for FS-532
PK-522	Punch kit for FS-532
RU-510	Reversing relay unit
RU-511	Decurling relay unit
RU-516	Anti-Static relay unit
RU-517	Anti-Static relay unit
SD-506	Saddle stitch unit
SD-510	Saddle stitch unit for FS-532
SD-513	Saddle stitch unit
TU-503	Trimmer unit for SD-513
WT-512	Working table



KONICA MINOLTA

© 2016 KONICA MINOLTA BUSINESS SOLUTIONS U.S.A., INC. All rights reserved. Reproduction in whole or in part without written permission is prohibited. KONICA MINOLTA, the KONICA MINOLTA logo, Count on Konica Minolta, bizhub, bizhub PRESS, PageScope, Simitri, and Giving Shape to Ideas are registered trademarks or trademarks of KONICA MINOLTA, INC. All other product and brand names are trademarks or registered trademarks of their respective companies or organizations. All features and functions described here may not be available on some products. Design & specifications are subject to change without notice.

KONICA MINOLTA BUSINESS SOLUTIONS U.S.A., INC.
100 Williams Drive, Ramsey, New Jersey 07446

CountOnKonicaMinolta.com

Printed on a **bizhub PRESS**



Item #: C1100SS
5/16 - S